

# HLS Page 1

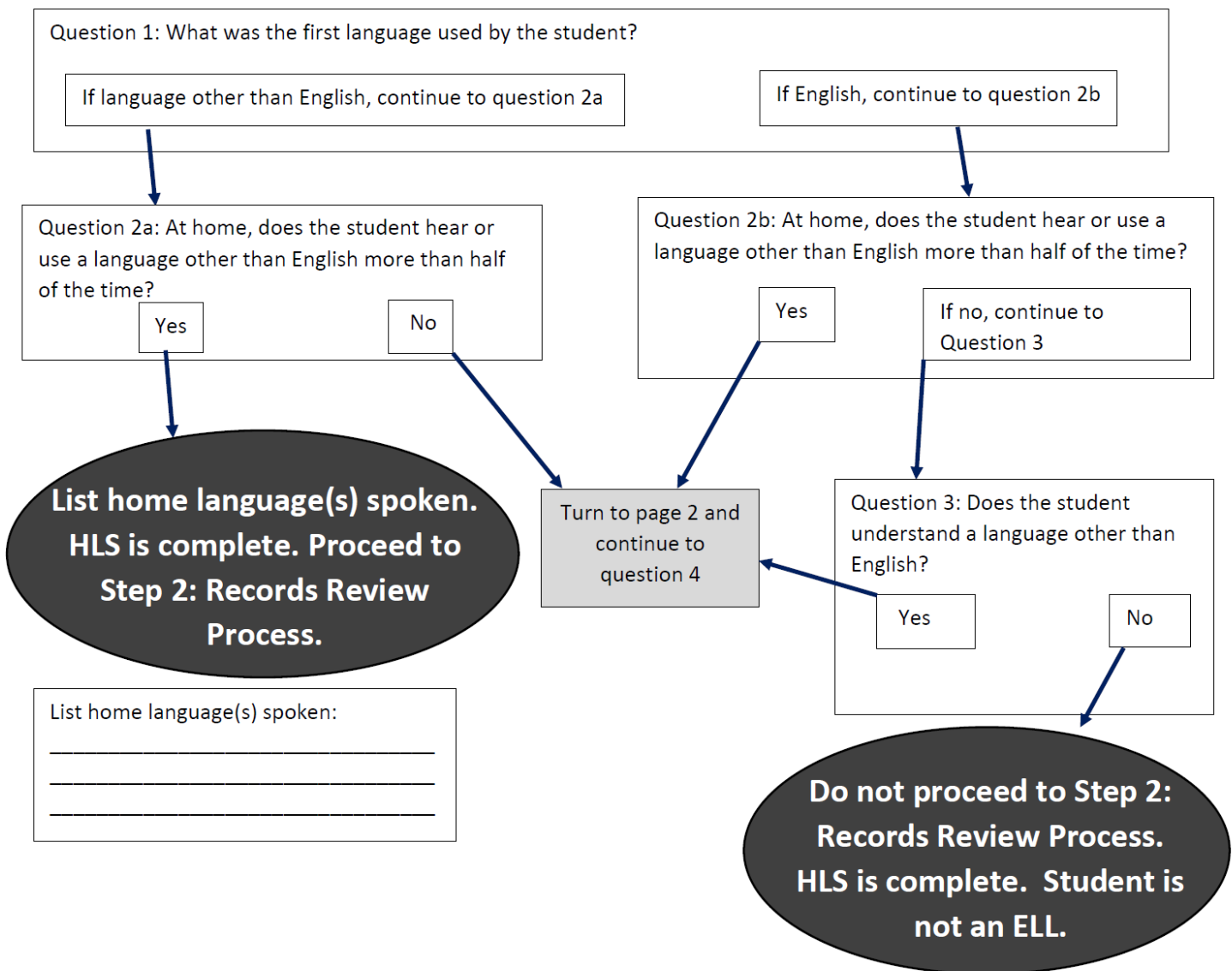
## ELL Identification Step 1: New Jersey Home-Language Survey (HLS)

### Purpose

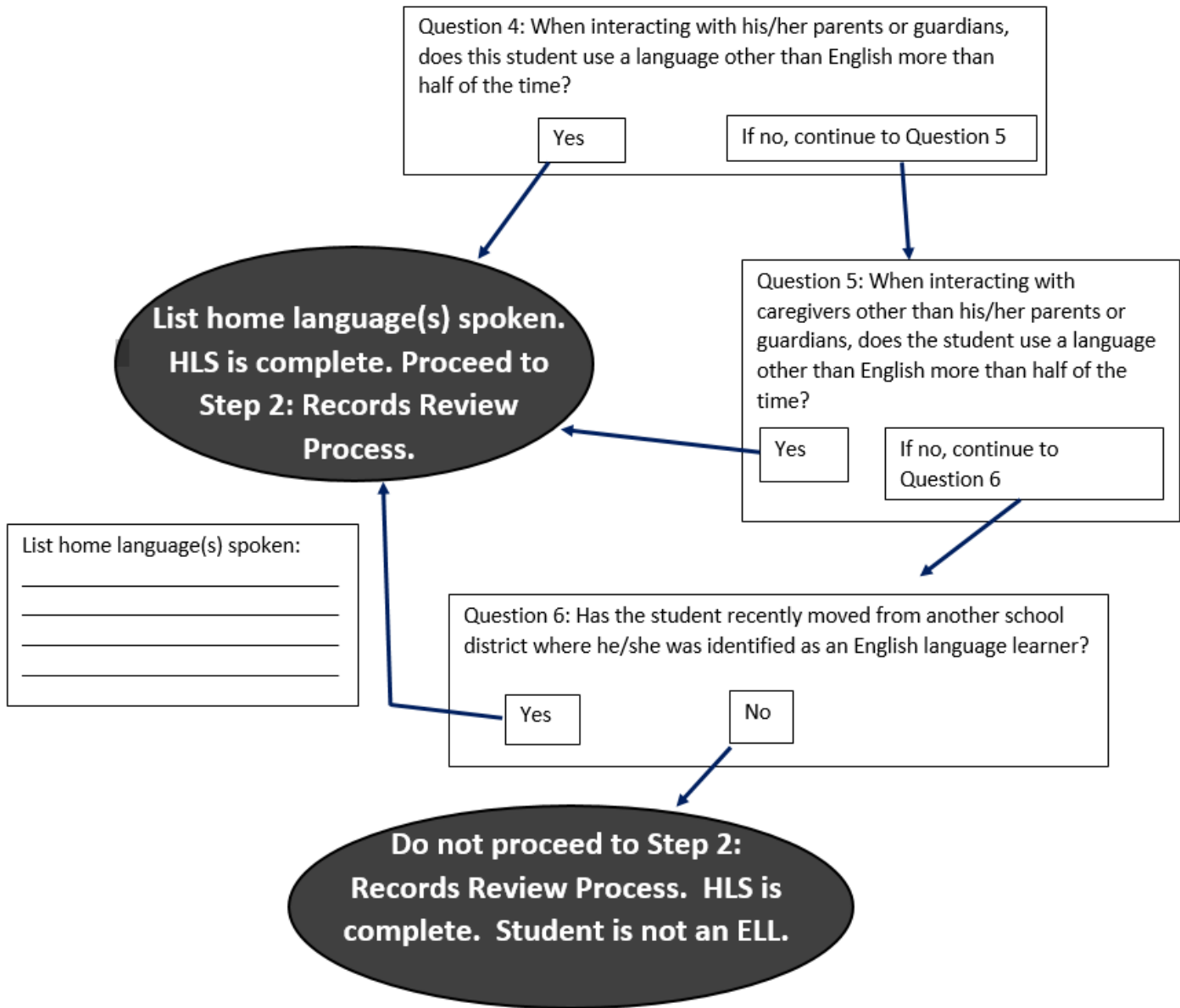
This survey is the first of three steps to identify whether a student is eligible to be identified as an English language learner (ELL).

### Instructions

Start with "Question 1" and continue until the HLS is complete. **Circle the answer for each question** and follow the directions. **When you arrive at a decision ("Proceed to Records Review Process" or "Do not proceed to Records Review Process"), the Home-Language Survey is complete.**



## HLS Page 2



A New Jersey certified teacher must screen all students whose home language is other than English using a records review process (below). The screening process must distinguish students who are proficient in English and need no further testing. Three indicators are used for this determination.